

Level 4

**Statewide:
College In Colorado/
Department of
Higher Education**

Level 4:

College In Colorado (CIC)/ Department of Higher Education (DHE) can aggregate data statewide for all CIC.org users such as all postsecondary, private K-12 schools, and workforce centers plus all school districts (181) with Report Central access.

Level 3

**Colorado Department
of Education 2001**

Level 3:

The Colorado Department of Education (CDE) can aggregate data from all districts (181) or selected districts, for all or some of the schools within one district with Report Central access.

Level 2

**All 178
Colorado
School Districts**

**School for the
Deaf and Blind**

**Charter Schools
Institute**

**Residential/Day
Treatment**

**Youth
Corrections**

Level 2:

Each district can aggregate data and run reports for all schools, some schools or one school in their district with Report Central access. The superintendent's office may contact Julia.Pirnack@cic.state.co.us for access.

Level 1

**All schools within
178 districts**

**Charter
schools**

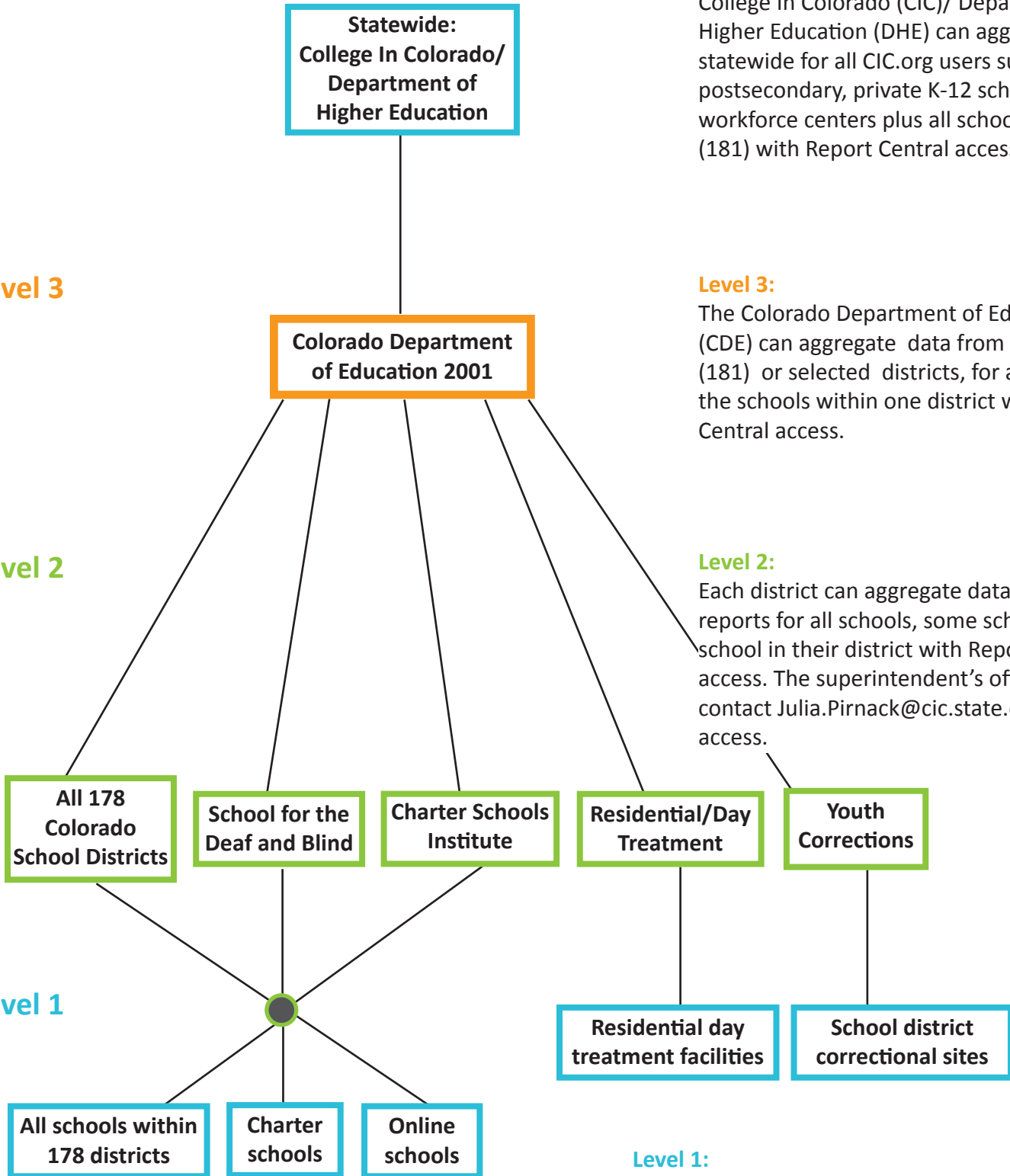
**Online
schools**

**Residential day
treatment facilities**

**School district
correctional sites**

Level 1:

Access to each school's student-level data, reports, communication and messaging is done through secured access codes in the Professional Center (procenter.collegeincolorado.org). Contact Twyla.Esquibel@cic.state.co.us for codes.



Reports Available

Usage Reports

Reports on general usage

Accounts Created - Number of accounts created by month.

Active Accounts - Number of active accounts as a percentage of all accounts created.

Page Views - Number of page views by month.

Sessions - Number of sessions by month.

Outcome Reports

Reports on account activity based on results of activity on CollegeInColorado.org or self-reported data in student's portfolio.

Abilities (from the Ability Profiler if licensed) - Distribution of users ability levels based on results from the Ability Profiler.

Basic Skills (from the Basic Skills Survey) - Distribution of users across the levels in each basic skill.

Career Plans (Careers/Programs/Schools from the Career Plan Builder) - All the unique career plans created by users in the Career Plan Builder.

Career Plans (Career Pathways selected) - Ranking of Career Pathways selected by users in the Career Plan Builder.

College Admittance Status Summary - Shows the status of account holders' college admittance process.

Admitted Status - Number and percent of account holders admitted to a college.

Application Submitted Status - Number and percent of account holders who have submitted applications.

Intend to Enroll Status - Number and percent of account holders who plan to enroll in a college.

Not Admitted Status - Number and percent of account holders who were not admitted by a college.

Wait-listed Status - Number and percent of account holders who have been wait-listed by a college.

College Applications - Number and percent of account holders completing college applications.

College Applications (one college) - Number and percent of account holders who completed 1 college application.

College Applications (two Colleges) - Number and percent of account holders who completed 2 college applications.

College Applications (three or more colleges) - Number and percent of account holders who completed 3 or more college applications.

College applications (students by college) - Ranking of colleges to which students have applied--both online and offline.

Completed EFC Calculator - Number and percent of account holders that have completed the EFC Calculator.

Completed Mock/Practice Interview - Number and percent of account holders that have completed a mock/practice interview.

Completed Resume - Number and percent of account holders that have completed a resume.

FAFSA Module Usage - Number and percent of account holders who used the FAFSA data transfer module

Focus Career Clusters (students by cluster) - Ranking of Career Clusters selected by users as a Focus Career Cluster.

Number of Saved Career Clusters - Number and percent of users who saved career clusters to their portfolio

Number of Saved Careers - Number and percent of users who saved careers to their portfolio

Number of Saved Colleges - Number and percent of users who saved colleges to their portfolio

Saved Career Clusters - Ranking of Career Clusters saved by users in their portfolios.

Saved Career Pathways - Ranking of Career Pathways saved by users in their portfolios.

Saved Colleges - Ranking of colleges saved by account holders in their portfolios.

Top 40 Saved Careers - Ranking of careers saved by users in their portfolios.

Top Career Clusters - Ranking of Career Clusters suggested by the Career Cluster Survey.

Transcript Requests - Number and percent of account holders who have submitted transcript requests.

Transferable Work Skills (from the Transferable Skills Checklist) - Ranking of transferable skills selected by users.

Work Interests (From Interest Profiler) - Ranking of Work interests suggested by the Interest Profiler.

Work Values (From Work Values Sorter) - Ranking of work values suggested by the Work Values Sorter.

Workplace Skills - Ranking of workplace skills selected by users.